



LOCKOUT PLUG 2" – 3.5" & INSERT TOOL

OPERATING INSTRUCTIONS

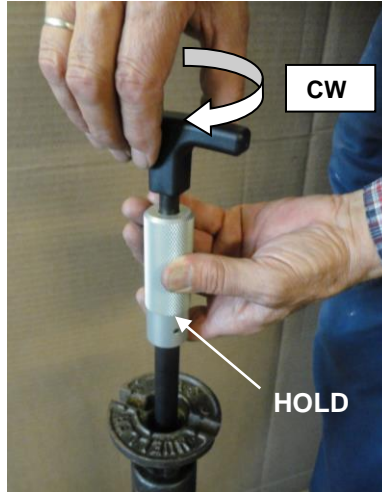
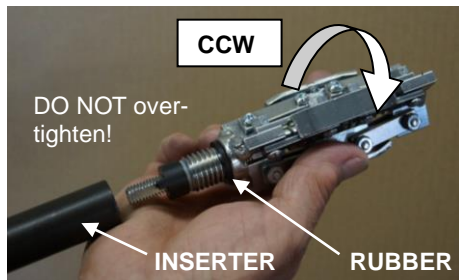
GENERAL GUIDELINES:

- Follow general workplace safety precautions.
- Always keep the tool in good working order by cleaning it after each use.
- Store the tool in a proper manner to prevent damage and to ensure a long lifetime.



WARNING! The warnings, cautions, and instructions discussed here cannot cover all possible conditions and situations that may occur. It must be understood by the operator that common sense and caution are factors which cannot be built into this product but must be supplied by the operator.

A - INSTALLATION:

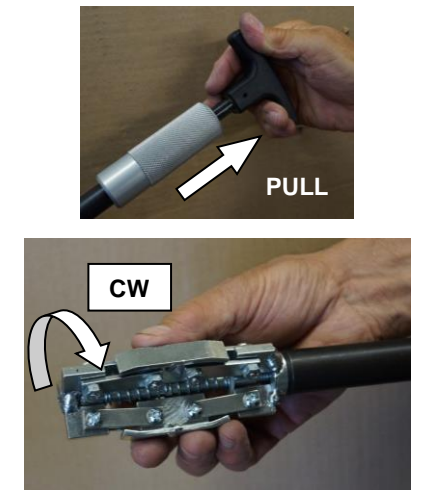
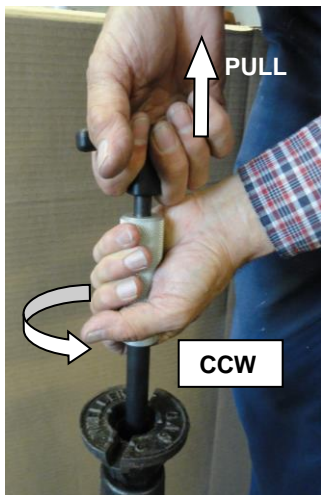


1. While pulling the black T-handle back, insert the Lockout Plug into the Inserter tool as shown and rotate it counter-clock-wise (CCW) until the rubber washer JUST contacts the Inserter tool.

2. While holding the aluminum handle, turn the black T-handle clockwise (CW) to expand the Lockout Plug in the opening. Continue until the Lock-out Plug can no longer be moved up or down.

3. Remove the Inserter tool by turning the aluminum handle clockwise (CW) until it comes loose from the Lockout Plug. The Lockout Plug is now installed in the opening.

B - REMOVAL:



1. Install the Inserter tool on the Lockout Plug by pulling the black T-handle back, and turning the aluminum handle counter-clockwise (CCW) until it becomes hard to turn. Ensure it is installed tight!

2. While holding the aluminum handle, turn the black T-handle counter-clockwise (CCW) to release the Lockout Plug. Apply slight upward pull to remove the Lockout Plug as soon as it becomes loose.

3. While pulling the black T-handle back, unscrew the Lock-out Plug from the Inserter tool by turning it clockwise (CW).

QUICK-INSTRUCTIONS: Installation: CW-CW, Removal: CCW-CCW